



## USB-PRO Owner's Manual



Message On Hold Player



### Features

- Uses standard stereo .mp3 files
- Non-proprietary USB flash drive
- Generic message and music plays when drive is removed
- Speaker monitors actual output signal
- Easily mounted on wall or use included feet
- Metal shell provides excellent RF shielding in phone environment
- Dual audio outputs (8-Ohm and 600-Ohm) for best output signal

### USB PRO Technical Specifications

|                    |  |
|--------------------|--|
| Media              | standard USB flash drive               |
| Controls           | volume, speaker on/off                 |
| Memory             | accepts up to 16GB USB flash drive     |
| Playback Time      | 4+ hrs. at 96Kbps on incl. 256MB drive |
| Enclosure          | metal                                  |
| Recording bit rate | 8Kbps to 128Kbps                       |
| Outputs            | 600-Ohm and 8-Ohm RCA outputs          |
| Dimensions         | 5.8W X 1.7H X 5.2L Inches              |
| Weight             | 2.3 pounds including power supply      |

### Support

Your digital music on hold player carries a 3-year manufacturer's warranty. Both the manufacturer and Easy On Hold are available via phone or email during regular business hours to assist you.

# Contents

- USB-PRO unit (digital player)
- USB flash drive
- AC transformer (power adapter)
- Mounting screw kit with rubber feet
- USB extension cable
- RCA-type audio cable
- 3.5mm adapter plug



## AUDIO CONNECTIONS

most phone systems are configured to use audio from this jack: 600Ω

# Installation

- 1. MOUNT UNIT:** Mount the digital player to a clean, dry surface using the screws provided. Locate player within six feet of the telephone system MOH input. For shelf mounting, apply the non-marring feet to the bottom of the digital player.
- 2. CONNECT AUDIO:** Using the supplied audio cable, connect the 600-Ohm audio output on the digital player to the music on-hold jack located on the telephone system. If you cannot find a music on hold input jack on your phone systems (sometimes labeled MOH) contact your telephone technician or installer.
- 3. CONNECT POWER:** Connect the AC wall transformer to the power jack on the digital player and plug the transformer into a standard 110V wall outlet. Status light will flash.
- 4. INSERT DRIVE:** Insert the MOH drive into the USB port on the front of the digital player. Status light will become steady; audio will begin to play within 10 seconds.
- 5. TEST AUDIO:** Depress the speaker on/off switch to hear audio. Speaker may remain off during ongoing use.
- 6. ADJUST VOLUME:** Call in to system and listen while on-hold. Use the volume knob on the back of the unit to set proper playback volume.

# Tips

The USB-PRO system will play the built-in generic on-hold message if you remove the USB drive from the player. Inserting the USB drive will automatically start playing any messages on the USB drive within 10 seconds.

We recommend stereo 128kHz, 16 Bit .mp3 files for best audio quality.

The USB-PRO will play multiple audio files in alpha-numeric order. All .mp3 files that are stored on the drive will play. Files must be named with the .mp3 extension in order to work.

## Change Message

1. When you receive your new Easy On Hold audio production, right click on the .mp3 file attachment and save file to your computer's desktop for easy retrieval.

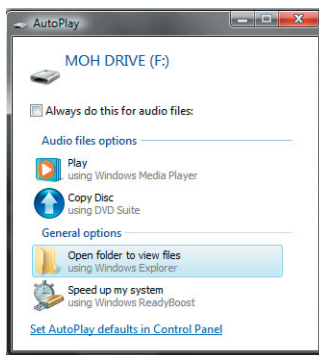
2. Remove the USB flash drive from the digital player and insert into a working USB port on the computer that contains the new message to be transferred. Use included USB extension cable if needed. Wait approximately 30 seconds for the MOH drive to be recognized.

3. "Auto Play" Method: If using your computer's "Auto Play" feature, choose "Open folder to view files".

4. "My Computer" Method: If not using "Auto Play", double click "My Computer" and locate the drive called MOH DRIVE. Double click MOH DRIVE to view contents. If MOH DRIVE does not appear, remove and reinsert drive, waiting 5 to 10 seconds for the drive to be recognized. If the drive is still not available, try a different USB port or use a different computer.

5. Delete any unwanted .mp3 files from the drive; drag and drop the new audio .mp3 file onto the drive.

6. Reinsert the USB drive into the digital player. The audio contained on the drive will begin to play in 10 seconds. The status light will change to steady-on.



With "Auto Play" feature enabled, the option to view the contents of the drive will be provided in a popup screen. The drive will be named MOH DRIVE.

---

### Manufactured by:

ProDigital Manufacturing  
14264 Lawrence Road  
Hudson, MI 49247  
Tel: 517-448-8049  
Toll-free: 800-620-7763

### Authorized dealer:

Easy On Hold  
1918 W. Milham Ave.  
Portage, MI 49024  
Tel: 269-342-4653  
Toll-free: 888-798-4653

**easyonHold**  
the music on hold experts

1-888-798-HOLD (4653)  
www.easyonhold.com