



iMCM iProMOH
41410/41420
Installation Guide

Thank you for purchasing the iProMOH.

The Interalia 41410(One Channel) and 41420(2 Channel) iProMOH's are intelligent music and message announcers, located at the customer site that combine the benefits of both digital storage space and digital download via TCP/IP. The iProMOH has firmware which allows it to work with the Interalia Multi-Site Content Manager (iMCM) central control software. The iMCM performs such functions as scheduling, audio file upload, firmware updates, etc.

This guide illustrates to you how to install/set up the deployed iProMOH through a web interface, and to be able to connect to and be configured by the centralized iMCM software. (See Figure 1 for network layout).

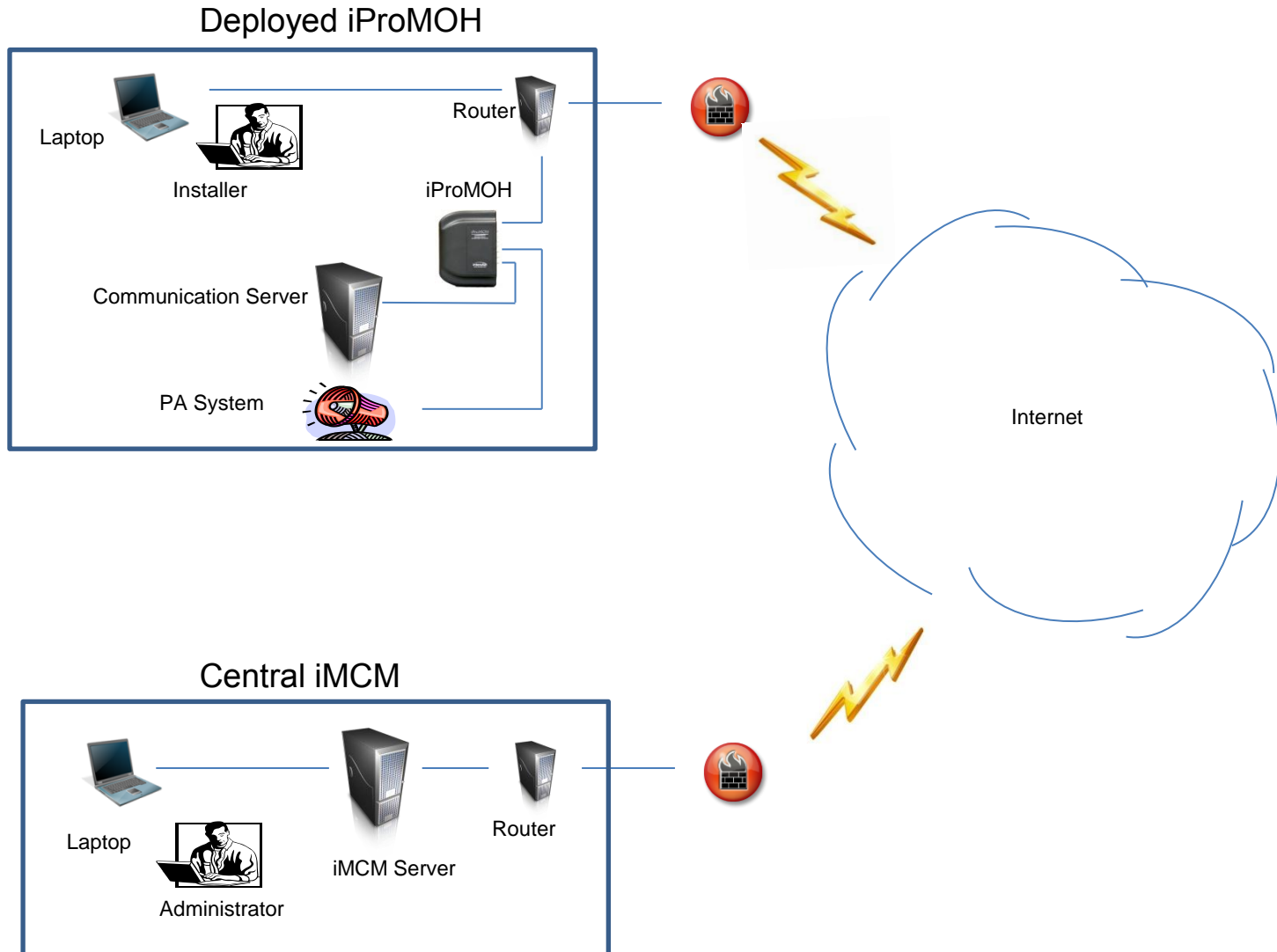


Figure 1 – Typical Deployed iProMOH/Centralized iMCM Network Layout

Packaging Contents:

- 1 X RCA to RCA connector (2 with 2 Channel Unit)
- 1 X RCA to flying lead connector
- 1 X Power adapter (with international connector adapters)
- 1 X Cat 5 network cable
- 1 X 3.5 mm mono to female RCA connector (2 with 2 Channel Unit)
- 1 X Hardware Kit (2 anchors, 2 screws, 4 rubber feet)
- 1 X Installation Guide



Requirements

- iMCM server installed at central site
 - o Note 1: You will need the IP address/port number of the iMCM server. Contact the iMCM server administrator.
 - o Note 2: Use the firewall IP address when the iMCM server is configured behind a port forwarded firewall. Consult with the IT administrator to identify the firewall IP address.
- MAC address of iProMOH unit (on label on back of iProMOH).
- Local LAN network port with internet access for iProMOH network connection.
 - o Note 1: The deployed iProMOH Network must allow outbound communication to the iMCM IP address/Port number. Consult with the local IT administrator to ensure there are no destination restrictions which match the iMCM IP Address and Port number.
- Installer computer with internet access on local LAN.
 - o Note 1: This may require coordination with the customer site IT administrator.

iMCM Server IP Address _____

Port _____

iProMOH MAC Address _____

Faceplate



Figure 2 – iProMOH Faceplate

From left to right:

PWR IN – Wall adapter power input jack. Connect the adapter supplied with the iProMOH to this input. No other adapters should be used.

NETWORK jack – This jack has two LED's, labeled "LNK" (Link indicator) and "ACT" (activity indicator).

- LNK will appear solid green if the Ethernet link is connected to an Ethernet connection
- ACT will blink amber when activity occurs on the Ethernet link

CH1 OUT – For Channel 1 output use either the 8 Ω or 600 Ω to connect to your Communication server or your Public Address system depending on its requirements.

CH2 OUT (2 Channel units only) – For Channel 2 the 600 Ω output plays different music/messages from Channel 1.

MUSIC IN – Connect to the "Line out" of a background music source (e.g. satellite feed, CD, radio, etc.) if required. Used to cross-fade with messages stored on the iProMOH.

SERIAL – Network redundant configuration port. Provides ability to set static IP Address and Call Home IP Address if network port is not available.

CH1/CH2 VOLUME – Volume control to adjust the output level of Channel 1 and 2. Each Channel can increment its volume from 1 to 9 and back to 1 in a circular manner. (Remote volume control is also available). Note: Pressing both volume control buttons simultaneously for 3 seconds will initiate an immediate Call Home session.

STATUS – provides iProMOH operational status

Flashing green	Call Home success
Flashing Green/Red	Call Home failure
Flashing amber	Initiating Call Home/updating content
Red	Error condition

See Figure 3 for typical connection diagram

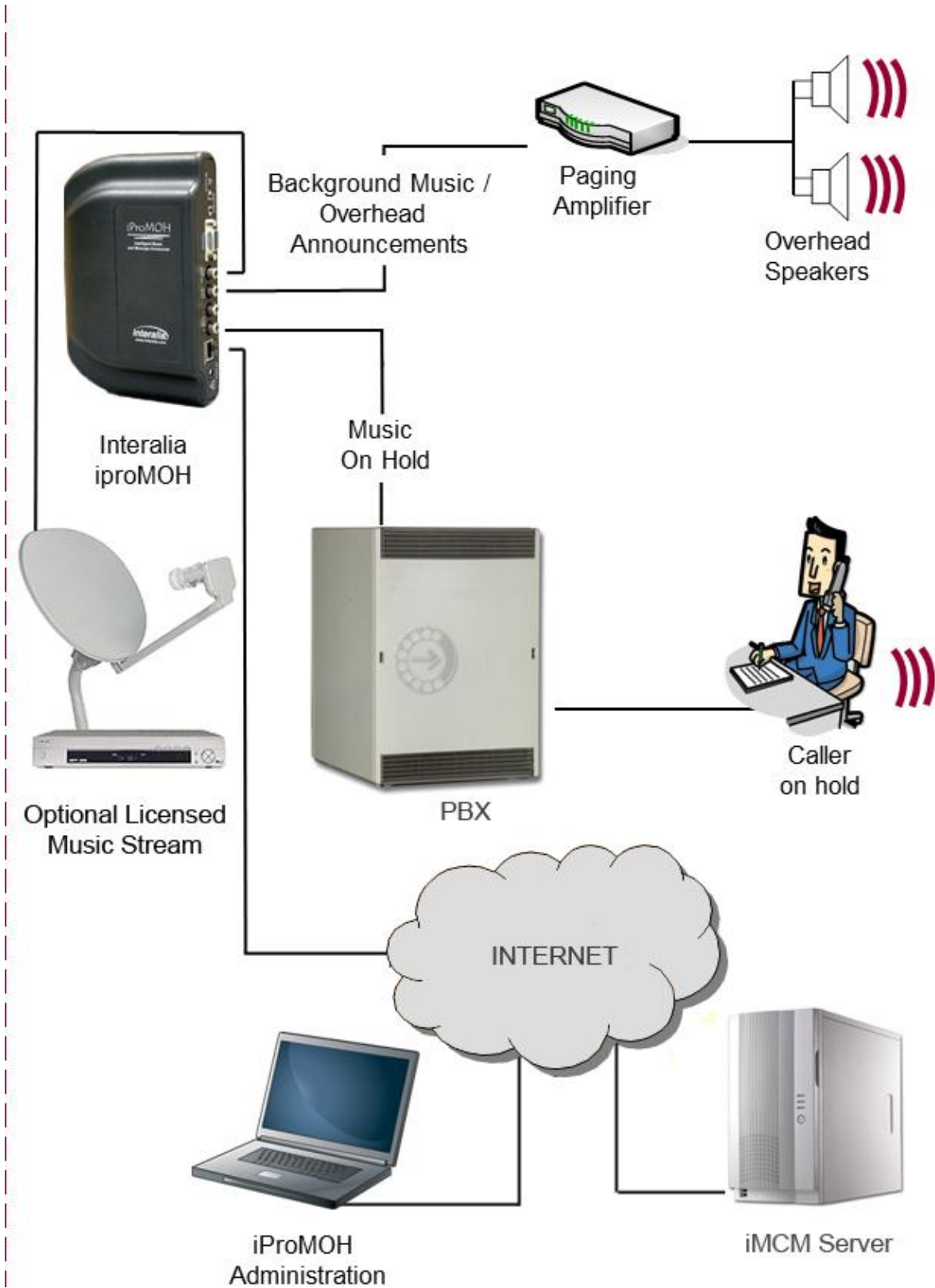


Figure 3 – Typical Connection Diagram

Installation

To install the iProMOH:

- (1) Using the wall-mounting template in Appendix 1 (located at the end of this guide), position the iProMOH near the Communication Server/paging system and secure it vertically to the wall as shown in Figure 4



Figure 4 – Wall mounted iProMOH

- (2) Using the Ethernet cable (RJ45 to RJ45); connect the iProMOH “NETWORK” jack to an available network connection on your local LAN. The network connection must have access to the internet.
- (3) Using the RCA interface cable, connect one of the iProMOH CH1 outputs (8 Ω or 600 Ω) to the Communication server’s Music on Hold (MOH) input or the Paging system’s Line-in input on the amplifier depending on whether the iProMOH is being used for MOH or announcements. Do not use both outputs simultaneously. (For a 2 channel iProMOH – using the second RCA interface cable connect the CH2 600 Ω output to a second system).
 - a. Refer to the Communication server/paging system technical specifications to determine which output to use.
- (4) Plug the power adapter into a wall outlet and connect the other end to the PWR IN connector on the iProMOH.
 - a. Ensure the Ethernet cable is connected before applying the power to the unit.

Setting up the iProMOH through the Installer Website Application at the Deployed iProMOH site

- (1) Connect the installer PC to the local LAN network with internet access.
- (2) Open the browser.
- (3) Locate the iProMOH MAC Address on the back label.
- (4) In the browser input field, type <http://ipm> followed by the MAC Address (no spaces)
 - a. i.e. <http://ipm00070700D5F3>
- (5) The Installer Website Application will open a page as shown (Figure 5)
 - a. In the Username field type the word iProMOH (it is case sensitive)
 - b. In the Password field type the MAC Address of the iProMOH (it is case sensitive)
 - c. Click the “Login “ button

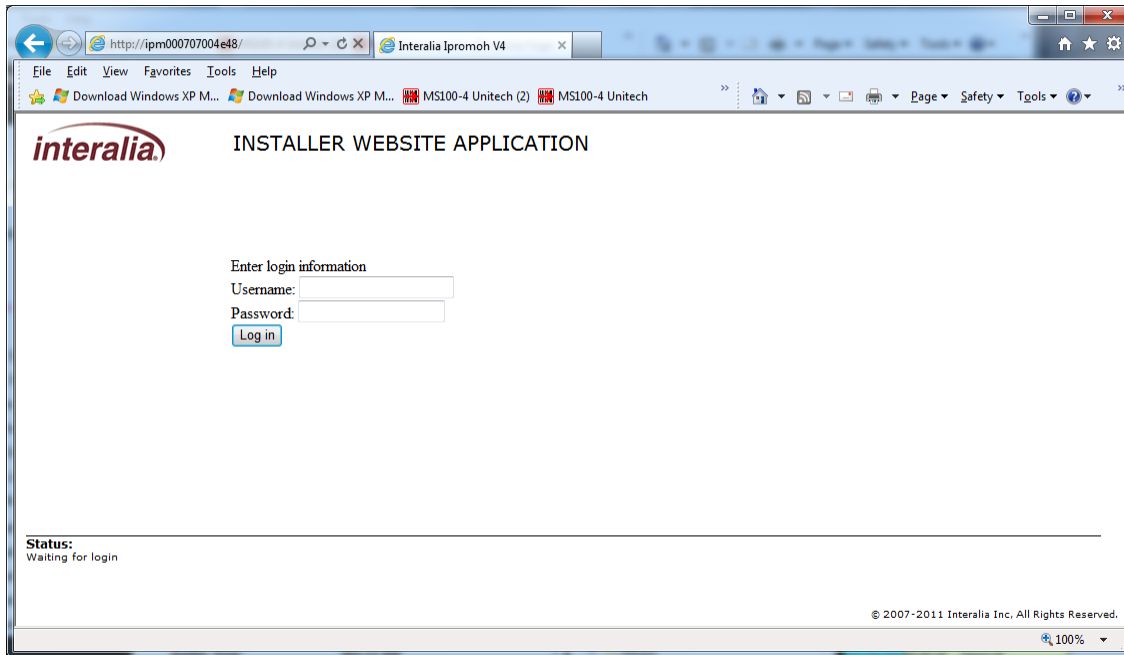


Figure 5 – Installer Website Installation Login page

- (6) The Installer Website Application will open a new page as shown in Figure 6
 - a. Network Setup
 - i. The Network set up will be pre-populated as shown
 - b. Call Home Settings
 - i. In the iMCM IP Address field input the iMCM server IP Address obtained from the iMCM server administrator
 - ii. In the Port field input the associated port (iMCM server administrator).
 - iii. Click the “Set/Renew” button to save the input data.
 - c. Installation Tools
 - i. Click the “Ping iMCM” button
 - ii. Successful attempt will then display “This iMCM is active” next to the “Ping iMCM” button
 - iii. Unsuccessful attempt will display “This iMCM has no response”
 1. In this case a possible issue is the local firewall outbound port may not be activated. Contact the local LAN administrator.

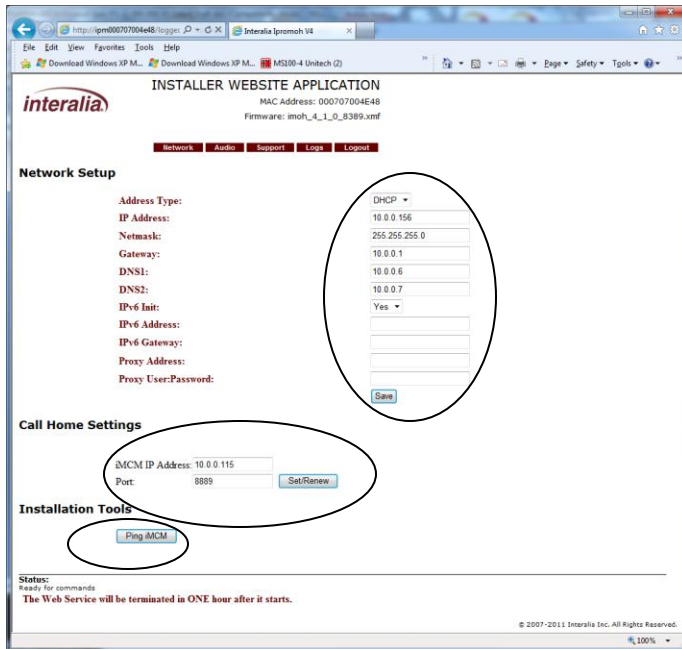


Figure 6 – Installer Website Application Call Home page

- (7) Press the CH1 and CH2 Volume control buttons simultaneously for 3 seconds to initiate an immediate Call Home session.
- (8) The deployed iProMOH installation is complete when the STATUS LED is flashing Green. Note: The Installer Website Application will be terminated in one hour after it starts

The Deployed iProMOH can now be configured by the iMCM control software from a central site.

Appendix 1 – iProMOH Wall Mount Template

****Requires Keyhole drill template****